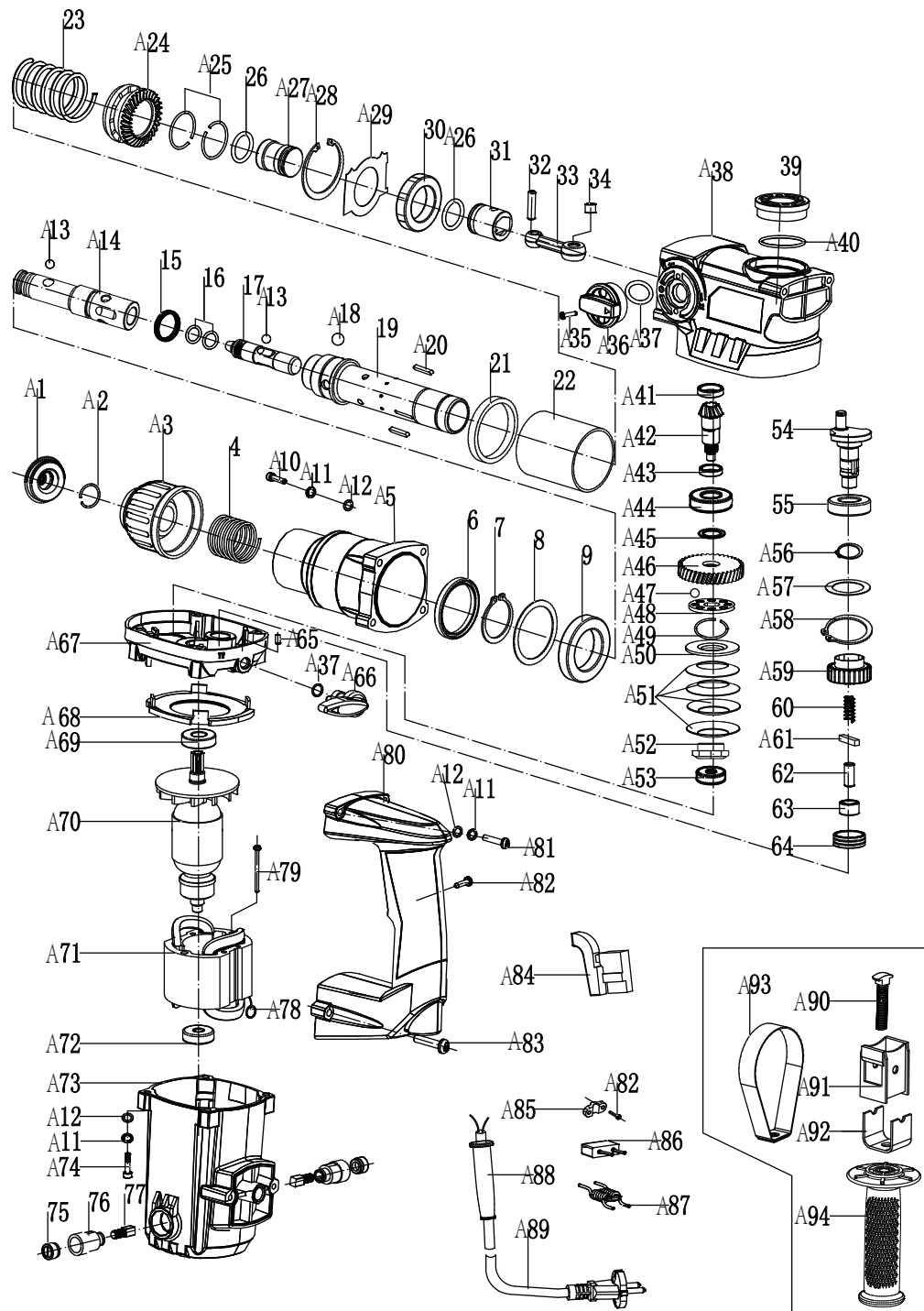


PE-25901



NO.	DESCRIPTION	NO.	DESCRIPTION
A1	RUBBER HEAD	A48	FIXED PLATE
A2	STEEL RING 17.5X2	A49	STEEL RING 12.5X1
A3	STEEL FRAME	A50	ACTIVE PLATE
4	SPRING 30.2X1.8X76	A51	DISC SPRING
A5	CYLINDER HOUSE	A52	NUT M10X0.75
6	OIL SEAL 35X51X6	A53	BEARING 627
7	CIRCLIP 35	54	CRANK
8	WASHER 45X54.5X1	55	BEARING6003
9	BEARING 6907	A56	CIRCLIP 17
A10	SCREW M5X25	A57	WASHER 34.5X28.5X1
A11	SPRING WASHER 5	A58	CIRCLIP 35
A12	PLAIN WASHER 5	A59	THE FIRST GEAR
A13	STEEL BALL Ø7.14	60	SPRING6.8X1.2X33
A14	TELEFLEX	A61	FLAT KEY
15	OIL SEAL 20.9*22X4	62	PIN 7*19
16	O RING 11X2	63	BUSH 16*12*10
17	IMPACT HAMMER	64	BUSH 22X26X9
A18	STEEL BALL Ø7.94	A65	RUBBER PIN 3*10.5
19	CYLINDER	A66	TWISTING FOR HAMMER
A20	FLAT KEY 3X2.5X18	A67	MIDDLE COVER
21	PLASTIC RING 47X55X7	A68	FAN GUIDE
22	DISTANCE SLEEVE 49.5X55X58.8	A69	BEARING 6001
23	SPRING 33.5X3.5X76	A70	ROTOR
A24	GAMP GEAR	A71	STATOR
A25	STEEL RING 28X1.6	A72	BEARING 608
26	O RING 19X3.1	A73	HOUSING
27	RAMMER 25*30	A74	SCREW M5X50
A28	CIRCLIP 47	75	BRUSH COVER
A29	OIL BOARD	76	BRUSH HOLDER
30	BUSH 30X47X9	77	CARBON BRUSH
31	PISTON	A78	SPRING
32	PISTON PIN 6X23.5	A79	TAPPING SCREW ST4.8X60
33	CONNECTING ROD	A80	HANDLE
34	BUSH 12*10*8	A81	SCREW M5X22
A35	SCREW M5X10	A82	TAPPING SCREW ST3.9X14
A36	TWO FUNCTION SWITCH	A83	TAPPING SCREW ST4.8X25
A37	O-RING 10.2X1.9	A84	SWITCH
A38	GEAR BOX	A85	CABLE BOARD
39	OIL COVER	A86	CAPACITOR
A40	O RING 31.5X2	A87	INDUCTANCE
A41	OIL SEAL19X28X4.5	A88	CABLE SLEEVE
A42	CONE GEAR SHAFT	A89	CABLE
A43	WASHER 15X19X4.7	A90	SCREW M8X35
A44	BEARING6002	A91	BRACKET
A45	WASHER14.1X19X0.5	A92	HOLDER
A46	THE SECOND GEAR	A93	HOOP
A47	STEEL BALL 5	A94	AUXILIARY HANDLE